



Educating Technology Leaders for Design-Driven Innovation

Thomas L. Magnanti
President, Singapore University of Technology and Design
Institute Professor, Massachusetts Institute of Technology

PICMET'14 Conference
July 30, 2014




BIG Questions Designing A World Class Innovation University

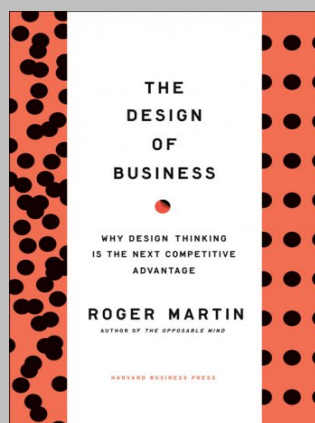
Intellectual and Programmatic Footprint?

Organization?	Staffing?
Culture?	Research?
Degrees?	Societal impact?
Curricula?	Facilities?
Pedagogy?	Technology?

Path to Greatness?

Innovation IP Design for Business Invention Design Entrepreneurship Big-D Design

Design Thinking in Business



Guiding Premises

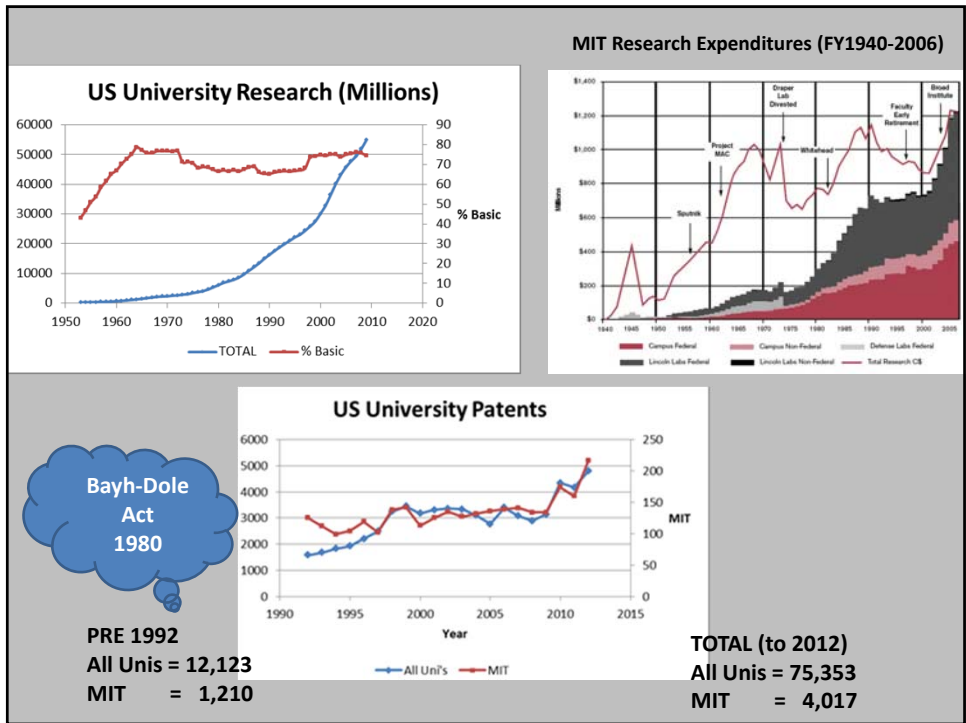
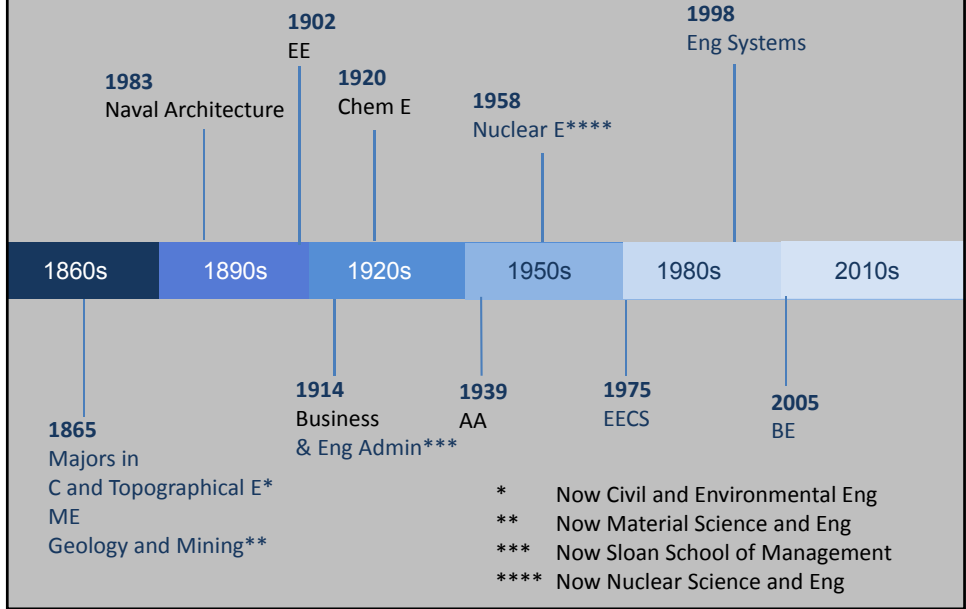
- **Technology and design are pervasive and essential for a vibrant society**
- **Common design knowledge, principles, practice and skills cut across many fields**
- **Successful technology-based design requires**
 - strong foundations in basic mathematics, sciences and technology
 - grounding in the arts, humanities and social sciences
 - coupled effectively with hands-on experiential learning
- **Technology leaders (innovators, engineers) are in short supply**

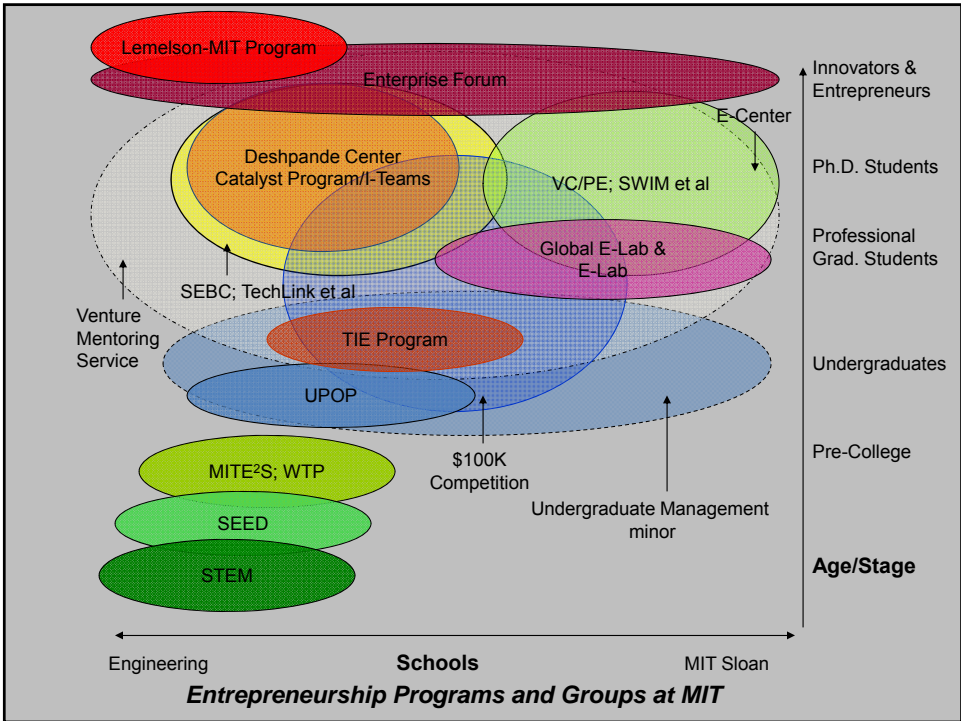
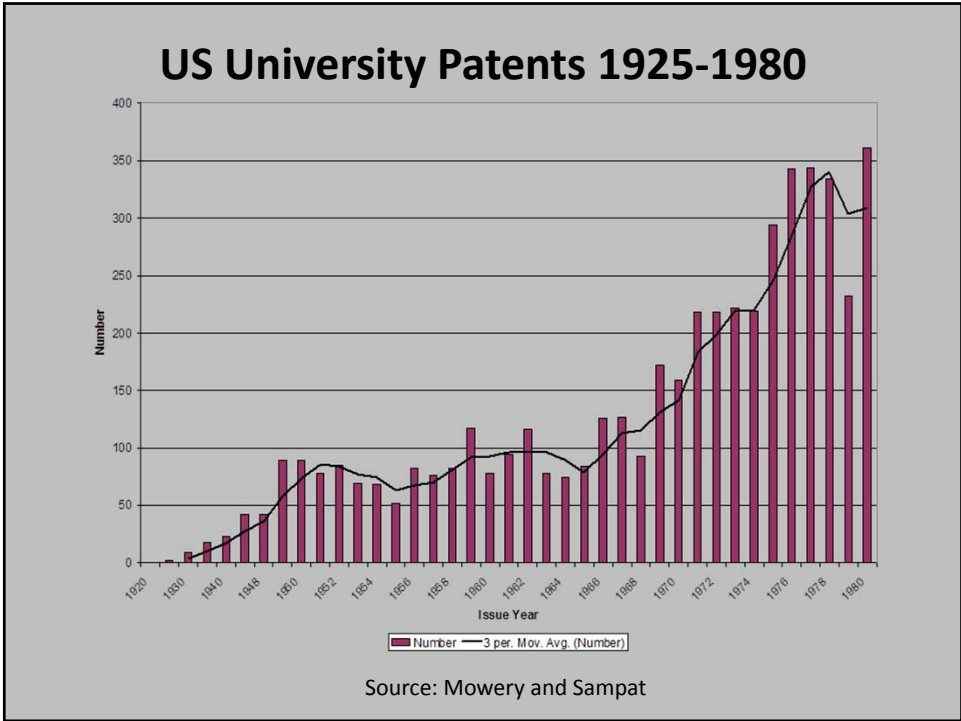


How did we get to where we are



Timeline MIT Engineering Departments





Masters Eng & Management

MIT LGO
Leaders for Global Operations

The LGO Difference | Program Experience | Career Development | Apply | News & Events

The LGO Difference
Connected to Industry
Student Life
The MIT Factor
Alumni Network
The LGO Fellowship

A different kind of dual-degree program
World-class faculty from two schools within MIT. An elite cohort of global operations and manufacturing companies. A group of 45 to 90 students with engineering backgrounds and strong leadership skills. You have MIT Leaders for Global Operations (LGO) faculty.

At a Glance
LGO students earn their engineering master's degrees from one of seven programs within the MIT School of Engineering.
Engineering Programs >
A six-month internship at a partner company is a cornerstone of the LGO program.
The LGO Internship >
Over 95% of LGO graduates are hired by graduation.
Career Development >

MITsdm
system design and management

ABOUT | NEWS & EVENTS | EDUCATION | FACULTY | ALUMNI | INDUSTRY | RECRUITMENT | ADMISSION | VOICES

ABOUT US
System Design and Management Program

The Best of MIT
SDM Advantage

Jointly offered by the MIT School of Engineering and the MIT Sloan School of Management, SDM is at the forefront of graduate education at MIT.
The centerpiece of SDM's portfolio is its rigorous 12- to 24-month master's program in engineering and management. SDM also offers a one-year graduate certificate program in systems and product development. The SDM curriculum for both is built on a foundation of core courses in system architecture, systems engineering, and system and project management — integrated with management courses tailored to students with significant industry experience and solid technical backgrounds. Both offerings can be

MOT Graduate Programs Many Universities

MIT to the Marketplace

TLO 2012	
Invention Disclosures	694
U.S. Patents Filed	305
U.S. Patents Issued	199
Licenses	81
Trademark Licenses	139
Options	26
Companies Started	16

Living MIT Alumni	
Companies Founded	25,000
Number Employees	3.3 million
Annual Revenue (\$)	1.1 trillion



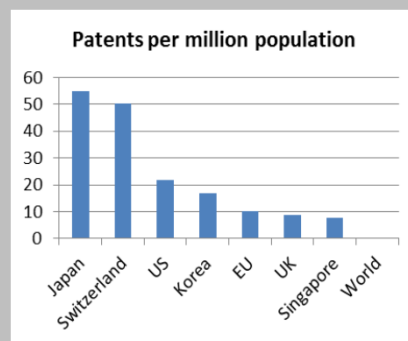
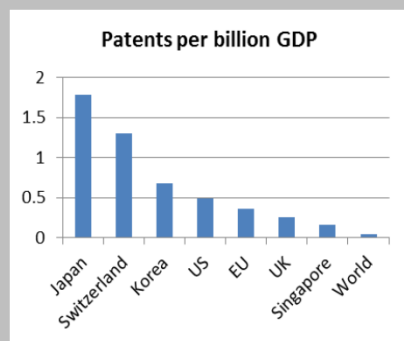
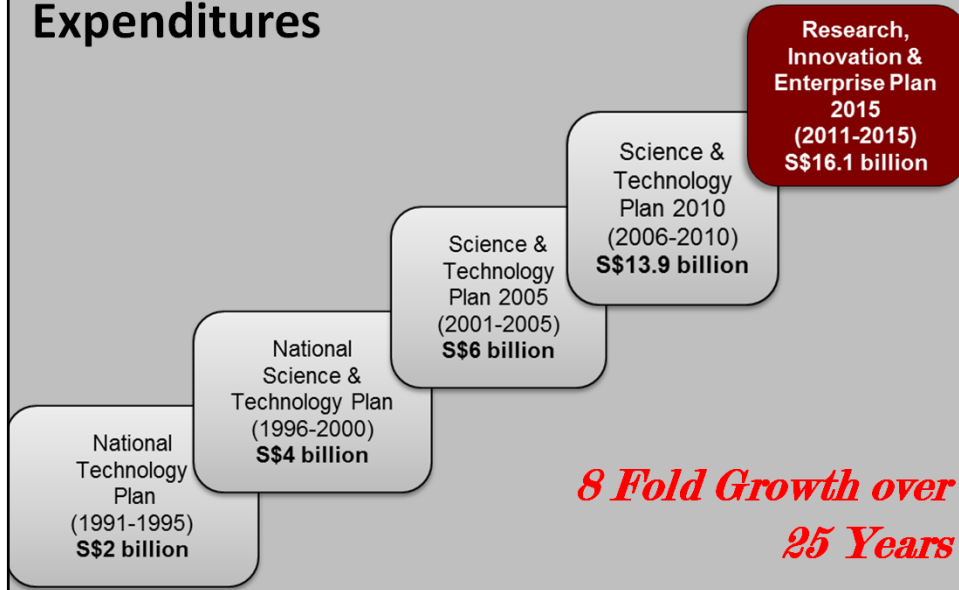
BIG Questions
Designing A World Class
Innovation University

Intellectual and Programmatic Footprint?

Organization?	Staffing?
Culture?	Research?
Degrees?	Societal impact?
Curricula?	Facilities?
Pedagogy?	Technology?

Path to Greatness?

Singapore Public R&D Expenditures



Patents 2005-2010
 Population and GDP data from World Bank; Patent data from OECD



SINGAPORE UNIVERSITY OF
TECHNOLOGY AND DESIGN

Established in collaboration with MIT

SUTD's Unique Value Proposition

Mission

- To advance knowledge and nurture technically grounded leaders and innovators to improve lives
- Focus on **Design** through integrated multi-disciplinary curriculum and multi-disciplinary research

Values

Leadership • Integrity • Passion
Collaboration • Creativity

Distinctiveness

- Innovative education for science & engineering talents
- Emphasis on **Technology, Innovation, Entrepreneurship**
- Develop graduates with ideas and solutions that have real-world impact and use

Strategic Collaborations



MIT






Zhejiang University



SMU

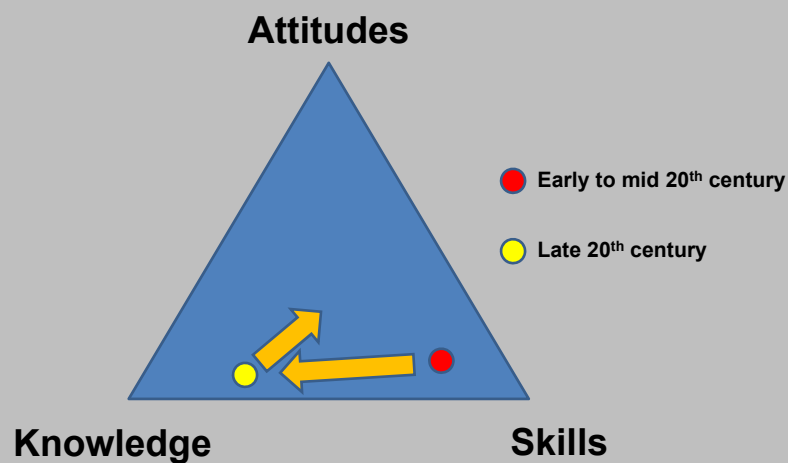


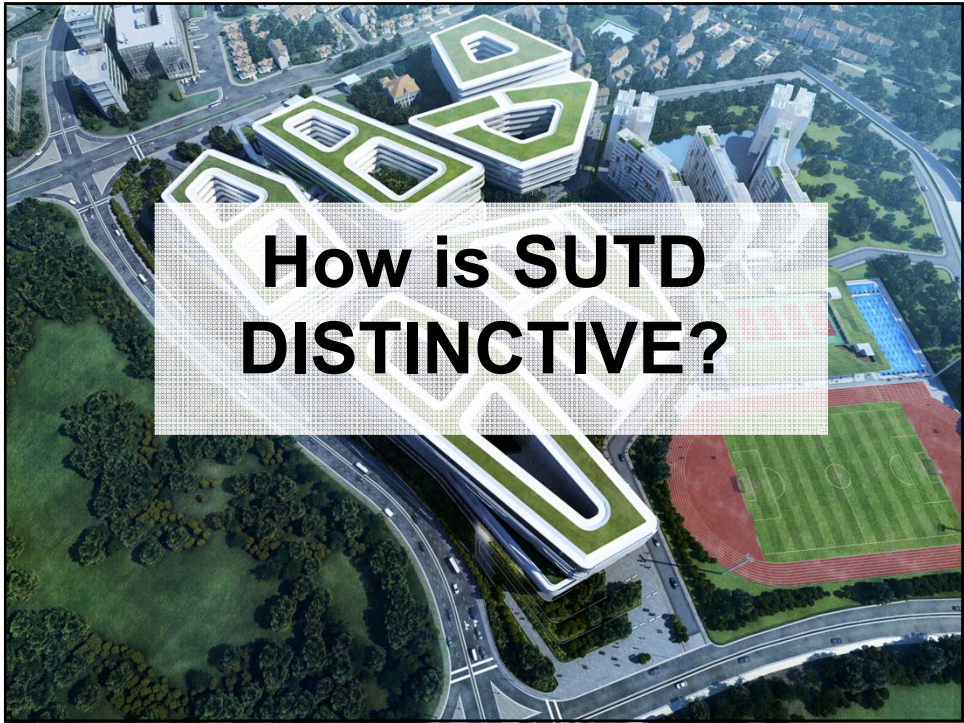
Collaboration with partner universities

 <p>Massachusetts Institute of Technology</p>	<ul style="list-style-type: none"> • Curriculum development (87 courses) and co-teaching • Recruitment and training of SUTD's faculty • Student exchange • Research collaboration • SUTD-MIT International Design Centre
 <p>ZHEJIANG UNIVERSITY</p>	<ul style="list-style-type: none"> • Development of 5 elective courses • Research collaboration • Student exchange
 <p>SMU SINGAPORE MANAGEMENT UNIVERSITY</p>	<ul style="list-style-type: none"> • Co-development of 5 elective courses • Research collaboration • Student exchange • Advanced placement for graduate school • Dual degree undergraduate program



Evolution of Engineering Education





design design design design design

design design design design design design design design design design

Grounding on Technology and Design

Degree Structure
Outside-in approach

Undergraduate Curriculum

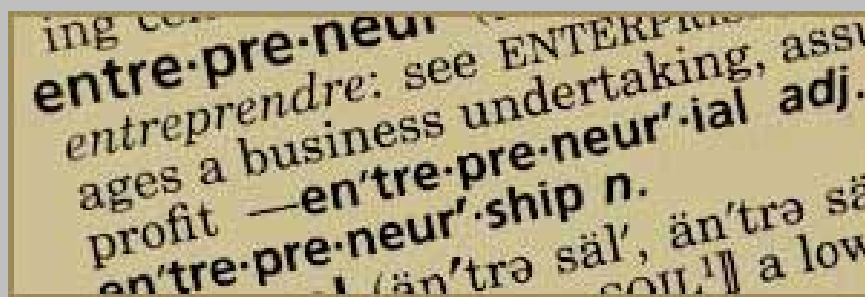
		ARCHITECTURE AND SUSTAINABLE DESIGN (ASD)	ENGINEERING PRODUCT DEVELOPMENT (EPD)	ENGINEERING SYSTEMS AND DESIGN (ESD)	INFORMATION SYSTEMS TECHNOLOGY AND DESIGN (ISTD)
PILLAR	Terms 4 to 8	Capstone Integrated Design Experience			
		Technical Application Electives			
		Architecture Core	Engineering Product Core	Engineering Systems Core	Information Systems Core
		Probability and Statistics			
		Entrepreneurship, Management, Social Sciences, Humanities, Arts			
FRESHMORE	Term 3	Modeling the Systems World, Engineering the Physical World, Digital World, Biology			
	Term 2	Advanced Mathematics II, Physics II, Design, World Civilizations and Texts			
	Term 1	Advanced Mathematics I, Physics I, Chemistry, World Civilizations and Texts			



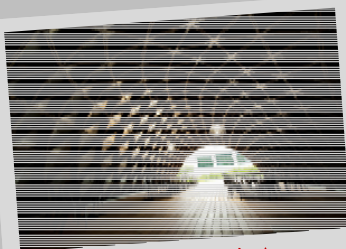
11:1 student-faculty ratio. Cohort-based. Dedicated classroom.
Not in big and impersonal lecture halls.

Pedagogy

- Cohort-based learning communities
- Project-based and hands-on learning throughout the curriculum
- Learning objectives and measurable outcomes for ALL courses
- Lecturettes and videos
- OpenCourseWare
- Khan Academy type material and learning



STUDENT-INVOLVED ACTIVITIES



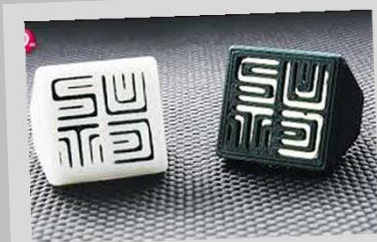
Library Extension Project



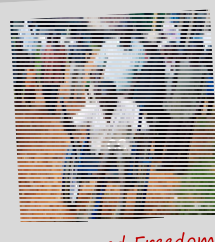
SUTD students developed the design concept for the Chinese New Year light-up for 3 years



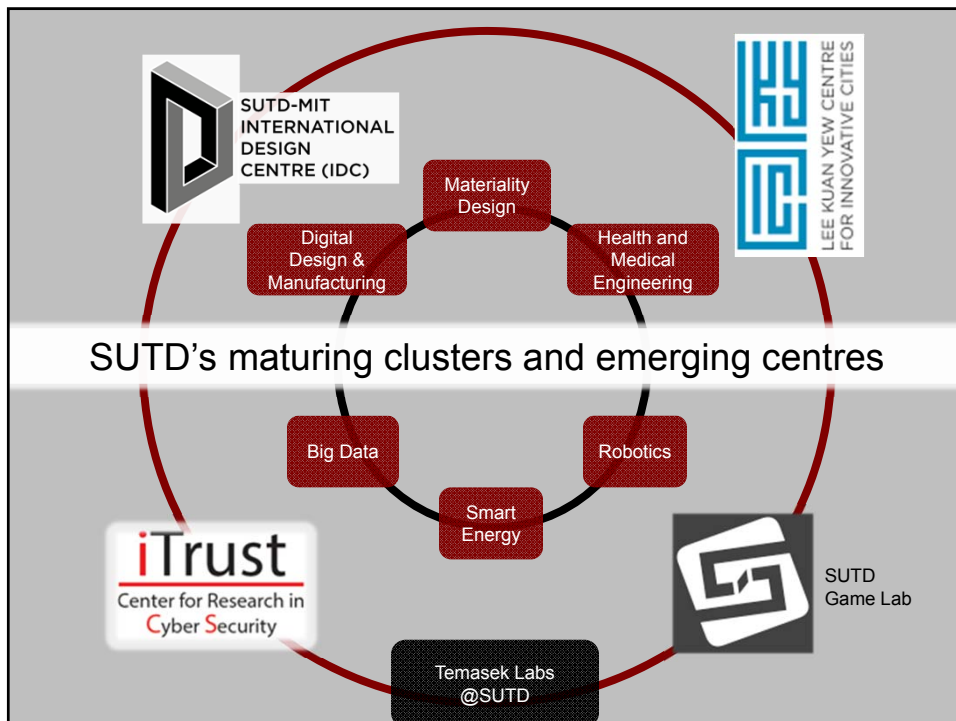
Chinese New Year Horse



Easy Ring



Leveraged Freedom Wheelchair





SUTD-MIT
INTERNATIONAL
DESIGN
CENTRE (IDC)

Undertake the impossible. Design the unexpected



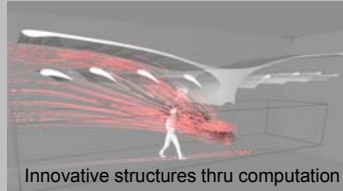
SINGAPORE UNIVERSITY OF
TECHNOLOGY AND DESIGN

Mission

The IDC intends to become the world's premier scholarly hub for technologically intensive design research and practice.

- 267** persons engaged in the IDC
- 115** research projects
- 50** leveraged grants
- 410** conference publications/presentations
- 232** book/journal publications
- 63** accolades
- 24** IP

Project Snapshots



Innovative structures thru computation



MICA cube

Design Grand Challenges →

Sustainable Built Environment

Design with the Developing World

ICT-enabled Devices for Better Living

Experimental Design

Design Computation

Visualisation and Prototyping

Fostering Creativity

Decision Making

Global Collaboration

↑ Design Research Thrusts



Pavilion: Gridshell structure



Housing connection and campus center

Campus

Ready by end 2014



Progress

Curriculum

MIT, ZJU, SMU
Freshmore Courses
Pillars
Postgraduate Programs

Research

IDC
LKY CIC
iTRUST
Game Lab
Temasek Labs
Faculty Driven Research

Human Resources

Top Flight Faculty (135)
Top Flight Students (921)
MIT Collaborators (>100)

Culture

Cohort Based Learning
Entrepreneurship
Experimentation
Autonomy

Infrastructure

Interim Campus
Permanent Campus
Equipment and Labs
Financial resources
Systems



SUTD Needs the Help and Support of the MOT Community



SINGAPORE UNIVERSITY OF
TECHNOLOGY AND DESIGN

Established in collaboration with MIT

Thank You

